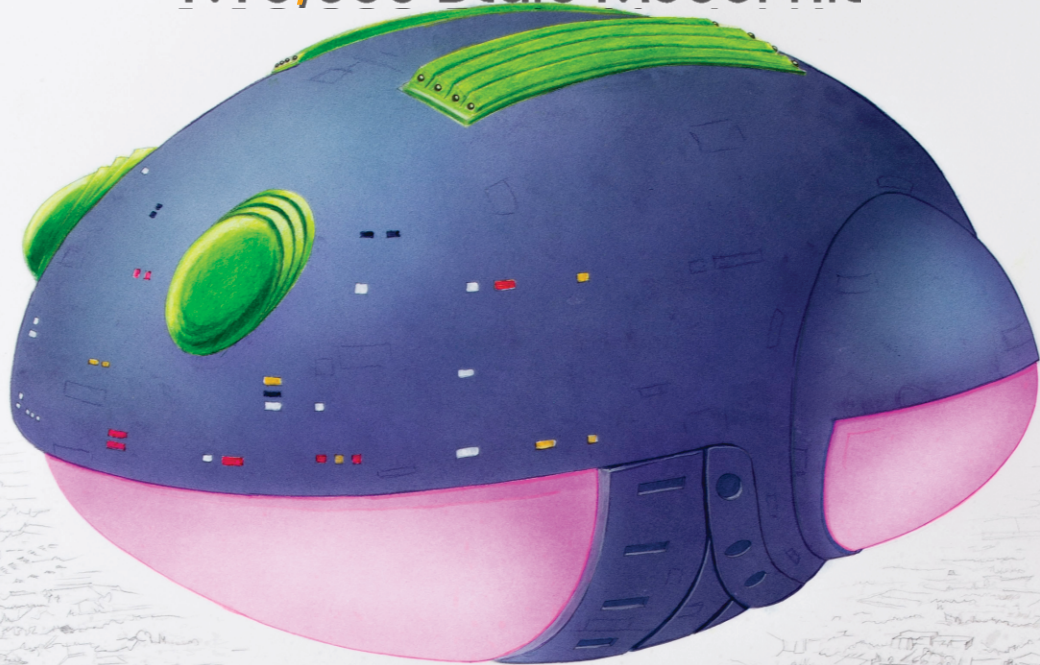


The Space Craft

1:10,000 Scale Model Kit



MODEL KIT

MojoModelworks.com

CHADWELL 26

Notes on:
Assembly & Finish

Working With Resin *Resin dust is an irritant. Wear appropriate PPE when sanding resin!*

Cleaning Parts

This model is 3D printed in UV sensitive resin. It has been rinsed, cleaned, rinsed again and then given a final cure before shipping. You may clean the parts again to remove any oils from your fingers if you wish. If you choose to clean the parts use light soap or mild de-greaser in luke warm (not hot) water.

Warped Parts

Occasionally a part may be slightly warped. It is simple to fix by running the part under hot water; once it had softened, you can bend it carefully back into shape. Once the part is straight hold it in place under cold water to set the shape.

Surface Prep

Like styrene models the surface of some resin pieces may need some smoothing or sanding. There are no mold lines with 3D printed parts but there may be small dimples to smooth. To do this, simply use fine grit sandpaper and smooth any imperfect surfaces. I also recommend a filler putty like Tamiya Putty, Perfect Plastic or Mr. Surfacer if needed to fill small imperfections.

Glue

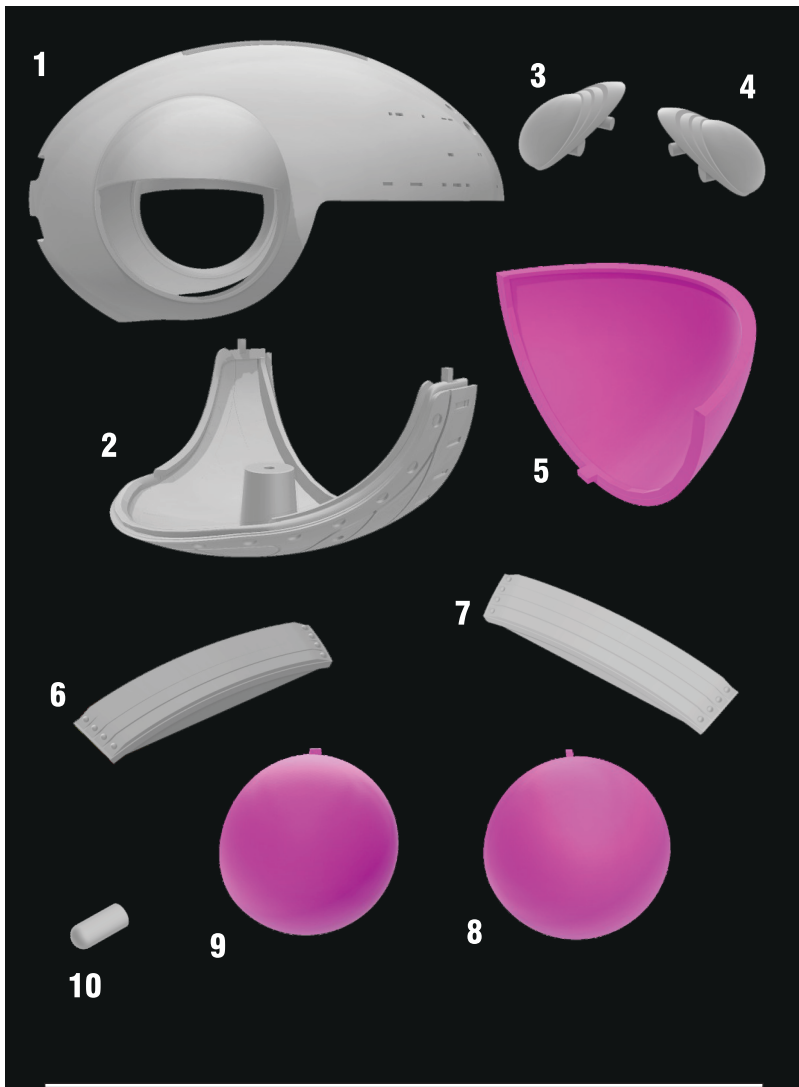
To glue resin, you should use Cyanoacrylate (Super Glue). You can sand the join area first to give it some tooth and a stronger bond if desired. For an extra strong bond- 2 part epoxy can be used on large pieces. You may also choose to drill small holes and pin pieces together though on the TIE Bomber model I have not found this necessary.

Working With Electronics

A Quick Note on the optional lighting kit. The lighting kit is an optional add-on intended for builders with some experience in electronics and soldering. If you're comfortable wiring, soldering, and working with batteries, you'll be right at home here. That said—use common sense and build safely. By proceeding, you accept full responsibility for your build. Mojo Modelworks is not liable for any damage, or injuries related to the installation or use of the lighting components.

- Disconnect the battery while building or modifying the circuit
- Double-check polarity before connecting the battery (red = +, black = -)
- Never connect LEDs directly to the battery—always use the included resistors
- Ensure all exposed wires and solder joints are insulated to prevent short circuits
- Install the switch on the positive (red) lead as shown in the diagram
- Do not charge a damaged or punctured Li-ion battery
- Only use a 3.7V Li-ion battery with a protection circuit (like the one shown)
- Do not leave the model charging unattended
- If any component becomes hot, disconnect power immediately

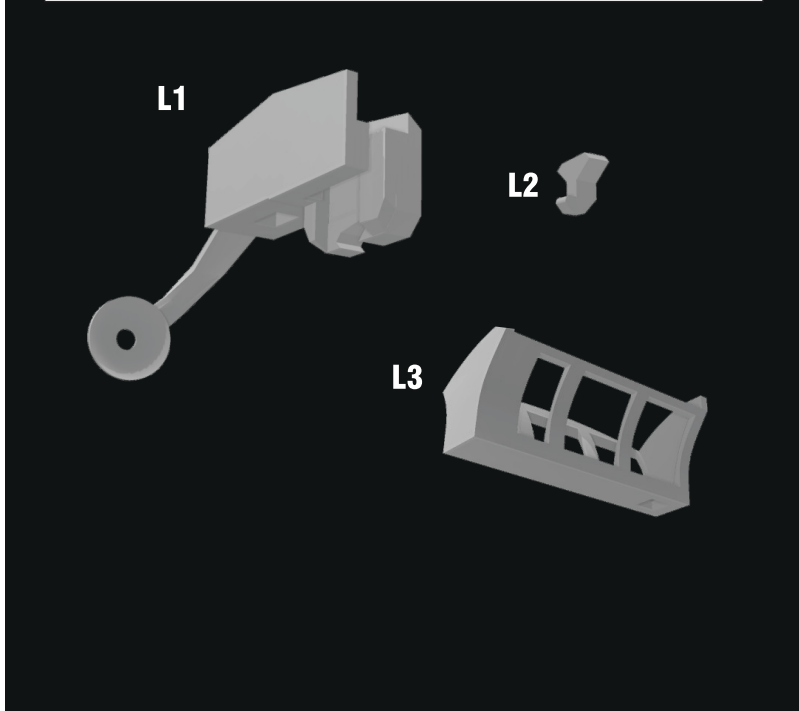
Parts Diagrams



Parts List

Starship Kit Parts

- 1 Hull
- 2 Bottom Hull
- 3 Right Eye
- 4 Left Eye
- 5 Smile
- 6 Left Mohawk
- 7 Right Mohawk
- 8 Right Ear
- 9 Left Ear
- 10 Engine Bulb (x10)

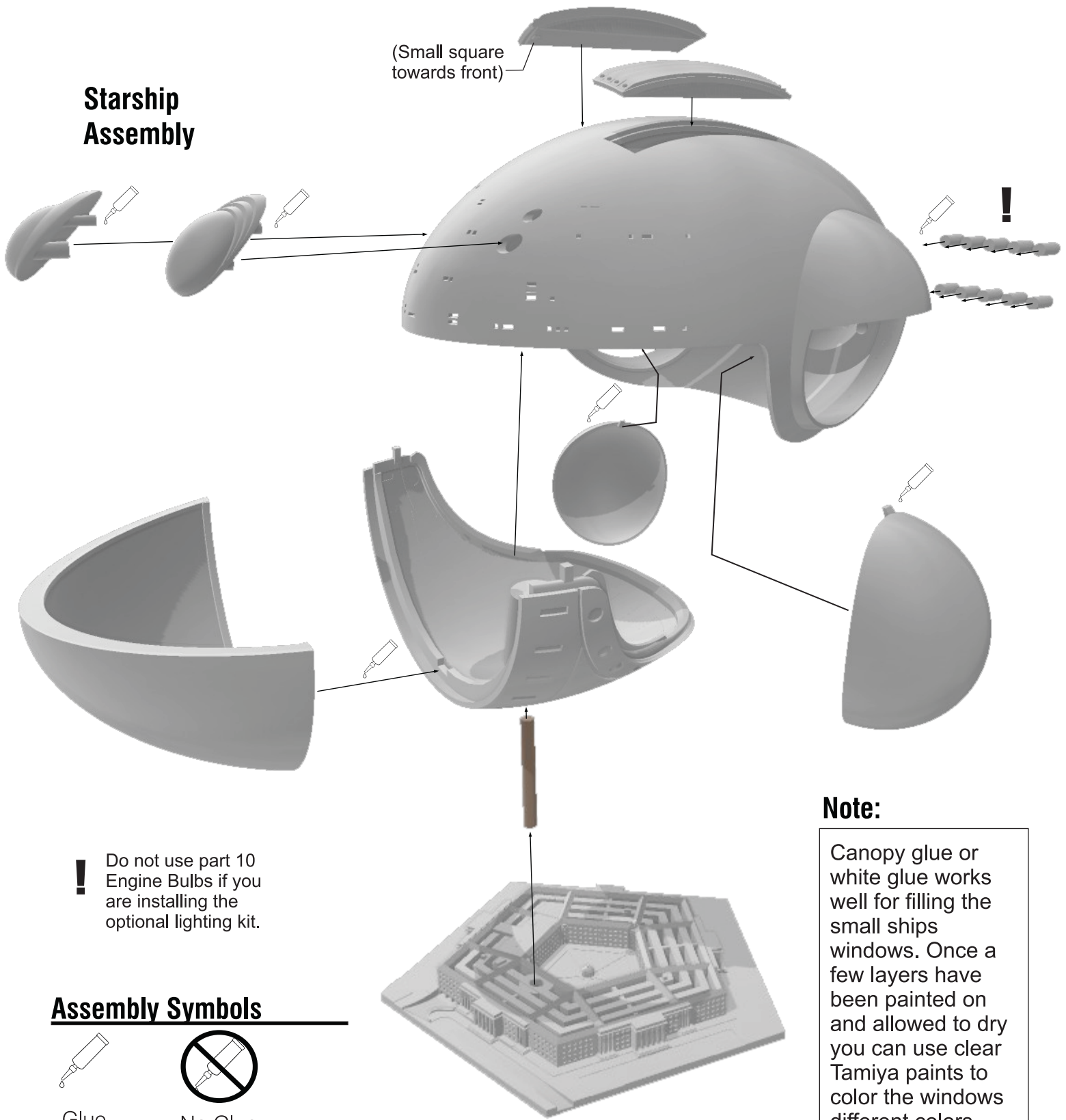


Optional Lighting Kit Parts

- L1 Frame
- L2 Board Hook
- L3 Battery Holder

Assembly

Starship Assembly



Assembly Symbols



Glue



No Glue



Choice



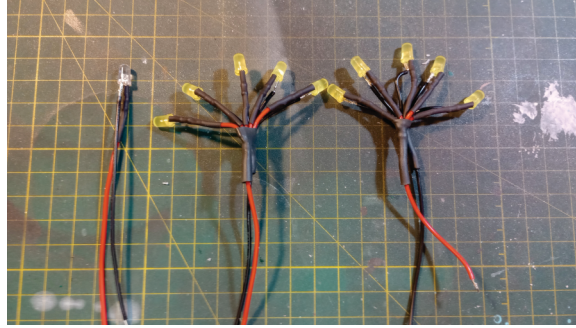
Attention!

HM Starship

Lighting Circuit Build Example



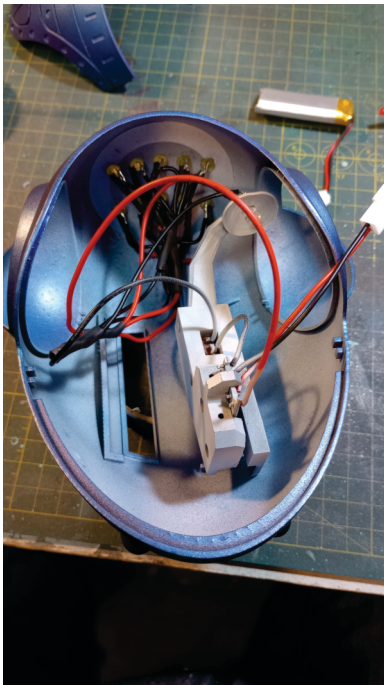
5 Yellow LEDs with resistors, positive and negative leads soldered on. Heat shrink tubing is also applied.



2 banks of yellow LEDs for engines and one white led for interior lights ready to use.



1 Bank of yellow engine lights installed.



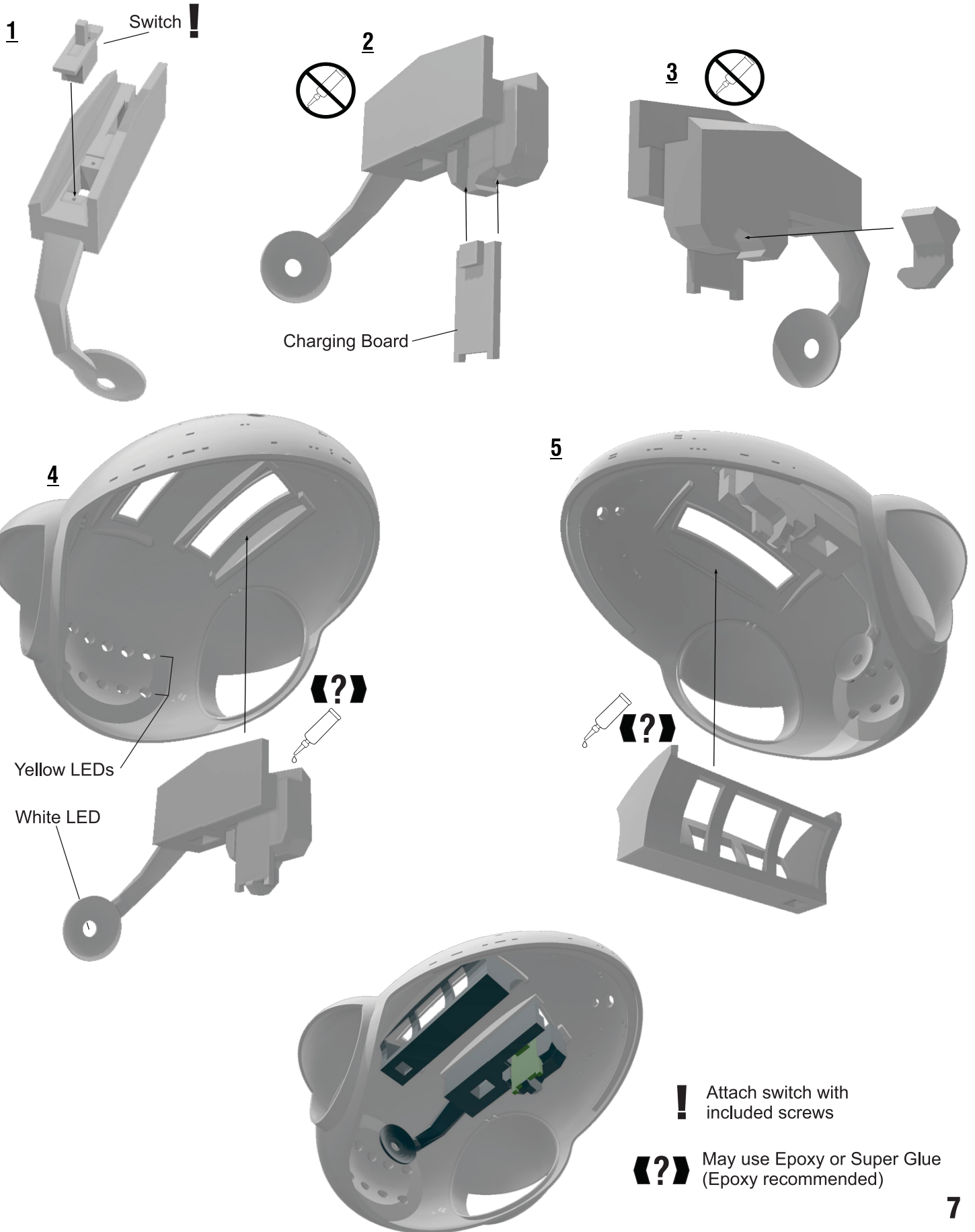
Lighting circuit installed with the exception of the battery holder and battery.



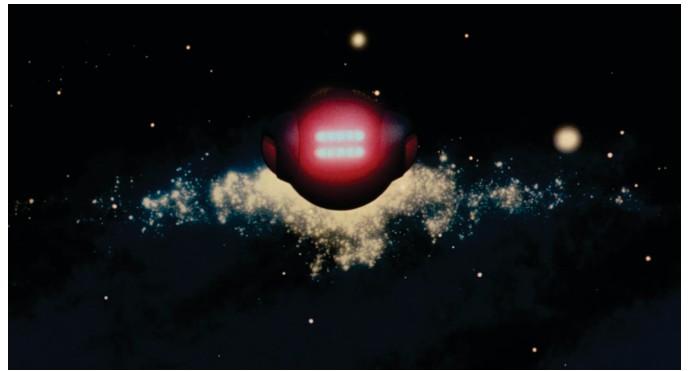
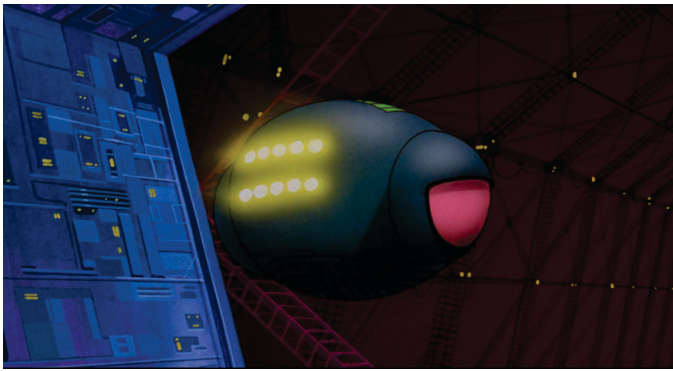
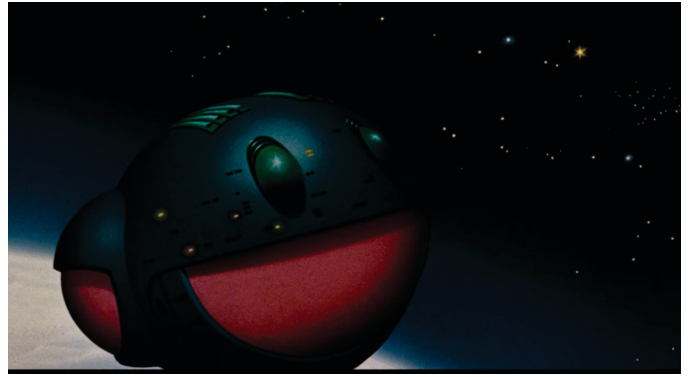
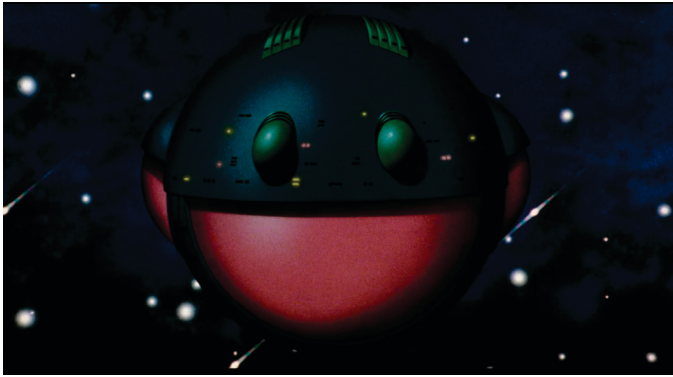
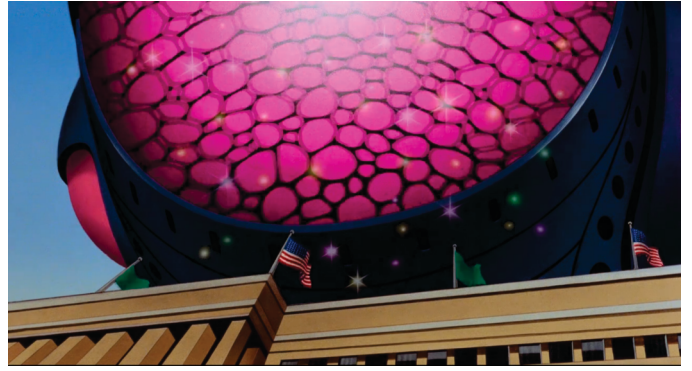
Complete lighting assembly finished.

HM Starship

Lighting Assembly



Color Reference



Color Chart

*Approximate color in Vallejo and Tamiya paints



77.168
Amethyst Purple
(Vallejo)



X-13
Metallic Blue
(Tamiya)



72.465
Forest Green
(Vallejo)



X-27
Clear Red
(Tamiya)



X-24
Clear Yellow
(Tamiya)



XF-82
Ocean Grey 2
(Tamiya)



XF-15
Flat Flesh
(Tamiya)



XF-63
German Grey
(Tamiya)



XF-80
Navy Grey British
(Tamiya)



X-15
Light Green
(Tamiya)

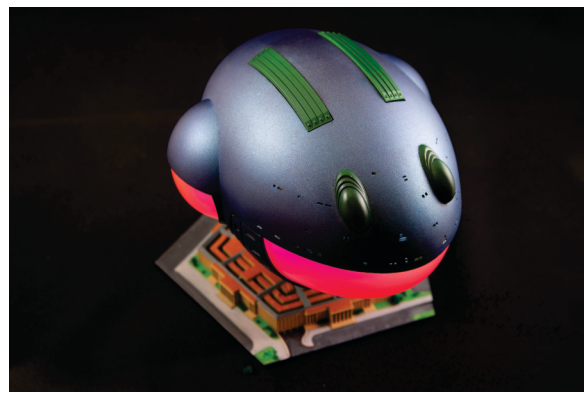
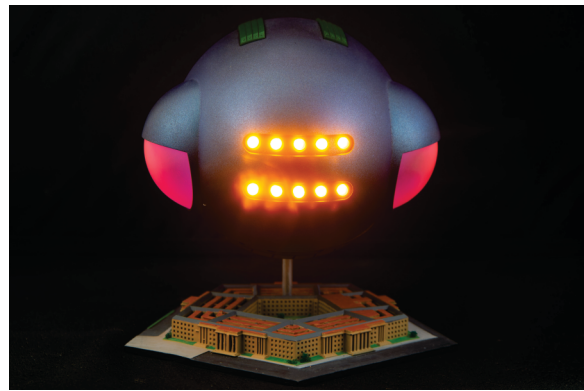
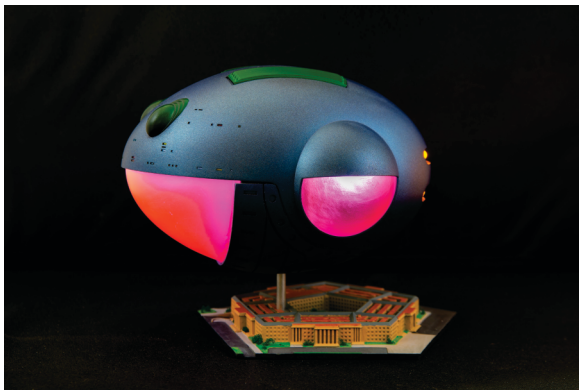
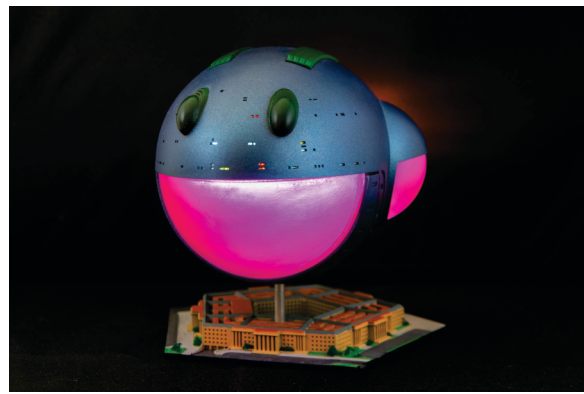
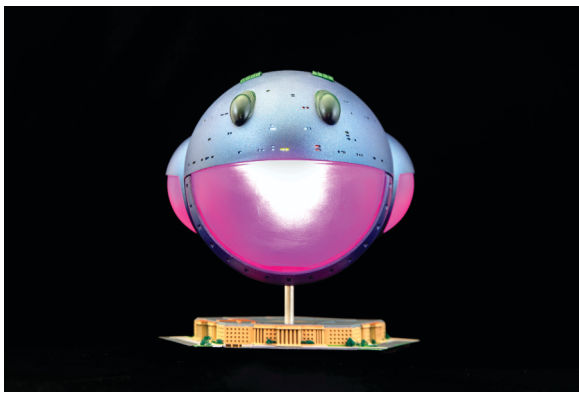
RLM63



70.981
Orange Brown
(Vallejo)

**Use whatever brand of paint you like this is what I used and a starting point for your own research.*

Build Examples



Find these other fine model kits at



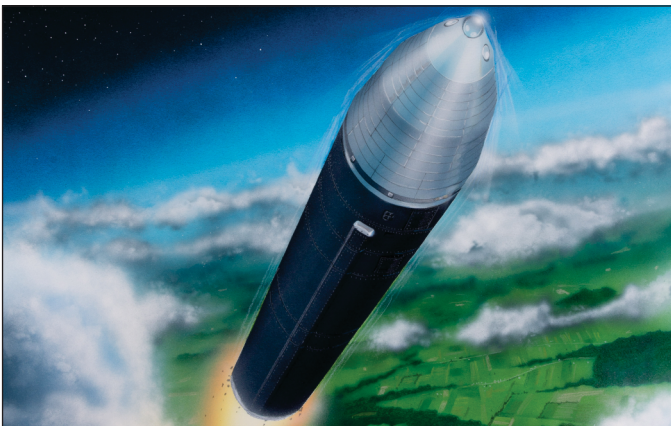
www.MejoModelworks.com



GAU-8 Avenger Canon | 1:12 scale



Eagle 5 | 1:72 scale



Peacekeeper LGM-118 | 1:48 scale



Indy Tank | 1:35 scale



White Castle Slider | 1:1 scale



Mobile Launch Pad Detail Parts | 1:144 scale

Don't Stash Em, Build Em !